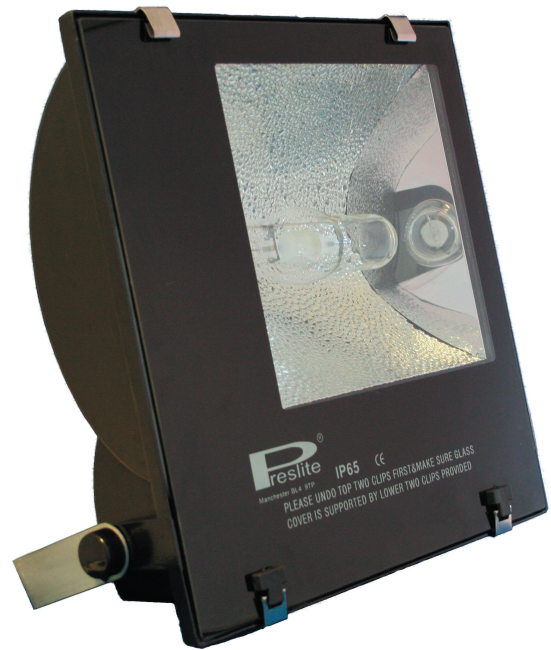
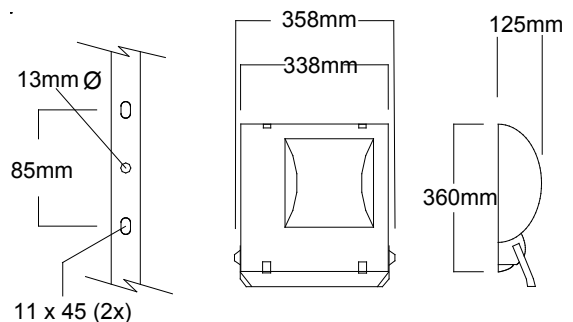
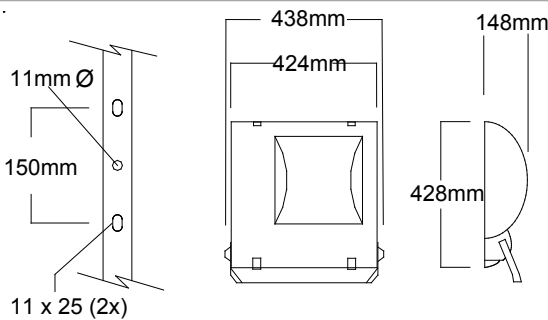


# Superior Flood



- Hinged Toughened Glass Front
- Powder Coated Aluminium Body
- Asymmetric & Symmetric Reflectors
- Adjustable Stirrup Bracket
- Sealed to IP65
- High Purity Aluminium Reflectors

Die cast aluminium floodlight sealed to IP65 with toughened glass front retained by hinged stainless steel clips. Galvanised steel stirrup type mounting bracket supplied. Two sizes of body available for the full range of wattages in SON and HQI from 150w to 400W. Can be produced in either Asymmetric or Symmetric versions. Wall or column mounted, stirrup bracket allows for 180 degree movement. Integral photocell option available.



## ORDER CODES

150w SON	Small Symmetrical Floodlight	DFPS150
250w SON	Large Symmetrical Floodlight	DFPS250
400w SON	Large Symmetrical Floodlight	DFPS400
150w HQI	Small Symmetrical Floodlight	DFPM150
250w HQI	Large Symmetrical Floodlight	DFPM250
400w HQI	Large Symmetrical Floodlight	DFPM400
150w SON	Small Asymmetrical Floodlight	DFPAS150
250w SON	Large Asymmetrical Floodlight	DFPAS250
400w SON	Large Asymmetrical Floodlight	DFPAS400
150w HQI	Small Asymmetrical Floodlight	DFPAM150
250w HQI	Large Asymmetrical Floodlight	DFPAM250
400w HQI	Large Asymmetrical Floodlight	DFPAM400

## SPECIFICATION

Die cast aluminium powder coated body floodlight luminaire with toughened glass front retained by stainless steel hinged clips sealed to IP65 supplied with european branded gear and timed cutout ignitor. As Preslite Superior Flood.

## Materials and Design

Die cast aluminium body with removable gear tray. Toughened glass front cover retained by two stainless steel hinged clips on bottom edge fitted with safety chains and two stainless steel clips on the top edge fixed to the body of the luminaire. Galvanised steel stirrup bracket pre-drilled with mounting holes (see diagram) attached to body by nut & bolt with spring washers and protected with plastic covers.

The Reflectors are fabricated from flat rolled high purity 0.45mm hammered pattern medium aluminium sheet and are fixed into the body via screws and washers.

## Installation

The stirrup bracket can be fixed direct to masonry by means of rawlbolt or other suitable fixing through the pre drilled holes in the bracket, alternatively, it can be fixed to any one of our range of wall and column spigot brackets.

## Electrical

Cable entry is through 20mm compression gland entry on the bottom of the gear tray compartment. Electrical connection is via 3way Terminal Block. Gear tray features timed cutout ignitor as standard.

## Classification for Protection & Standards

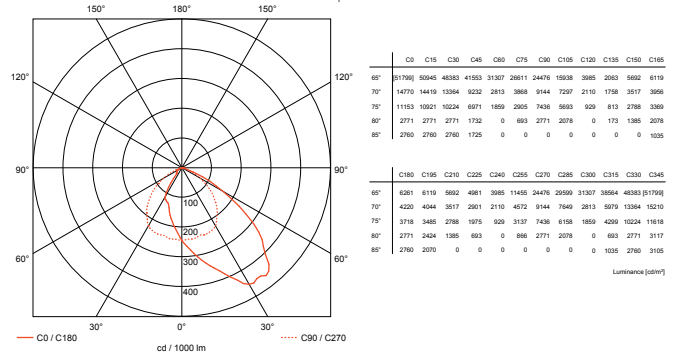
Against electrical shock Class1 protected with earthed metalwork. Against ingress of dirt and moisture IP65. The Superior flood is designed and manufactured to meet the requirements of BSEN60598-2-1.

## Photometric Data

Product Code: DFPAM400

Lamp: 400w HQI-T

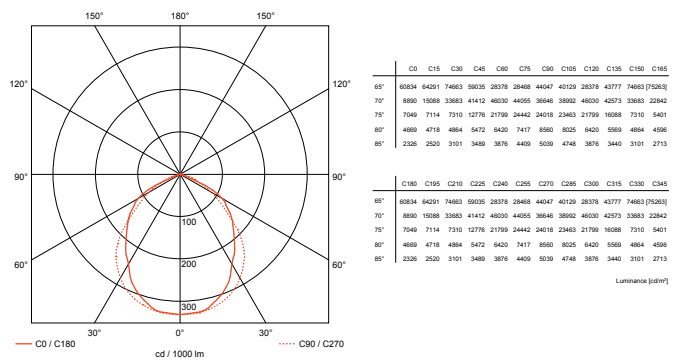
Light Output Ratios: Up: 0.00 Down: 0.68 Total: 0.68



Product Code: DFPM250

Lamp: 250w HQI-T

Light Output Ratios: Up: 0.00 Down: 0.68 Total: 0.68



Tel. +44 1204 575100  
Fax. +44 1204 574100

email : [sales@saturnlighting.co.uk](mailto:sales@saturnlighting.co.uk)  
<http://www.saturnlighting.co.uk>