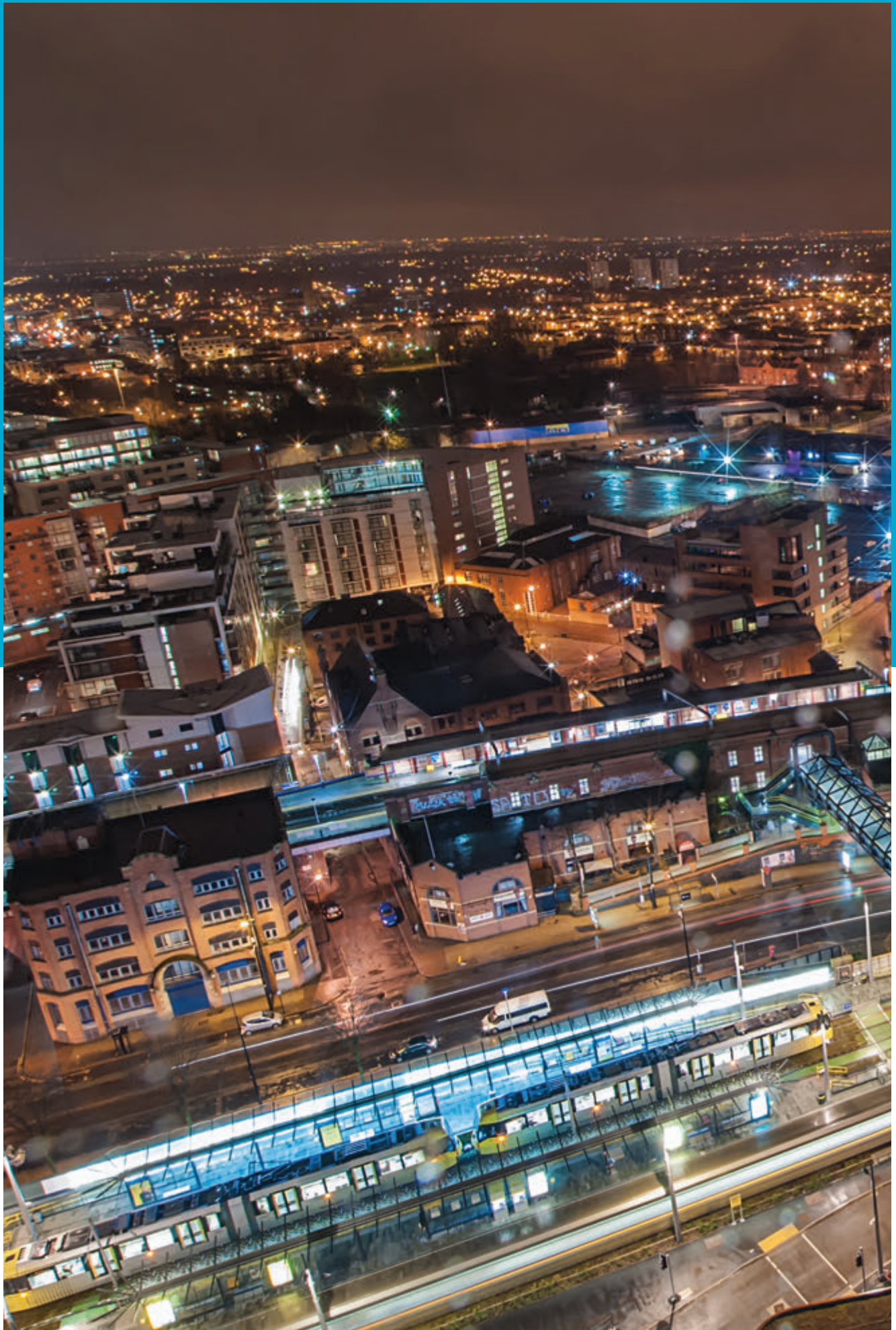


Saturn Lighting **LED** Products  
**2019/20**

# SMART LED







# SMART LED

Saturn Lighting  
**LED Products**  
**2019/20**



**Saturn Super Distribution LTD. (Saturn Lighting). We were established in 1995 and are still a privately owned company, operating from Bolton, Greater Manchester.**

Saturn Lighting offers a comprehensive range of products under the "Preslite" and "Prestronic" trade names. Saturn Lighting can now offer a range of highly efficient LED luminaires incorporating high quality branded components from the likes of Philips Lighting, Helvar, Tridonic and ELT.

Saturn also offers a LED emergency conversion service as well as bespoke conversions to high efficiency LED light sources in existing fittings.





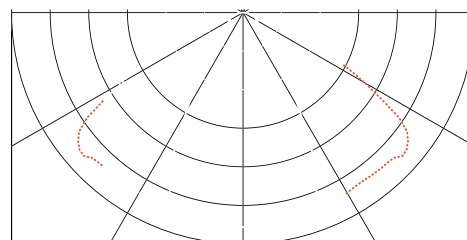
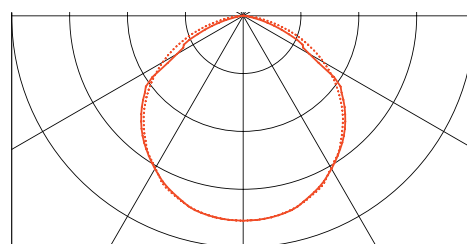
# POWERLUX LED LOW / HIGH BAY

Model: LDLF1



## Features:

- White Steel Housing
- Frosted LED Diffuser
- European Manufactured Driver & LED Board
- Supplied with Optical Attachment
- Integral Sensor Option
- Easy Fix & Connect
- No Need To Remove Any Covers



45W 6800 Lumen LED Powerlux	LDLF1
45W 6800 Lumen High Rack LED Powerlux	LDLF1HR
71W 11985 Lumen LED Powerlux	LDLF2
71W 11985 Lumen High Rack LED Powerlux	LDLF2HR
100W 12000 Lumen LED Powerlux Dali	LDLF3
100W 12000 Lumen High Rack LED Powerlux Dali	LDLF3HR
200W 24000 Lumen LED Powerlux	LDLF4
200W 24000 Lumen High Rack LED Powerlux Dali	LDLF4HR
142W 23970 Lumen LED Powerlux	LDLF5
142W 23970 Lumen High Rack LED Powerlux	LDLF5HR
Integrated Emergency	/EML

POWERLUX

System Wattage  
45w-200w  
Lumens  
6,800-24,000

LED

IP20

5  
YEAR  
WARRANTY



Designed and built  
in the UK

Model: LDLF1/2/3



IP20

## Low Bay 600 x 300

**System Wattage**  
45W-100W  
**Lumens**  
6800-12000  
**Voltage**  
220-240V  
**Size**  
595 x 300 x 45mm  
**Colour Temperature**  
4000K  
**Material**  
PMMA Lens  
Steel Housing

Model: LDLF4/5



IP20

## Low Bay 600 x 600

**System Wattage**  
170W - 200W  
**Lumens**  
23000-24000  
**Voltage**  
220-240V  
**Size**  
595 x 520 x 45mm  
**Colour Temperature**  
4000K  
**Material**  
PMMA Lens  
Steel Housing

Model: LDLINBAY1200



IP20

## Low Bay 1500 x 300

**System Wattage**  
55W-100W  
**Lumens**  
8800-15000  
**Voltage**  
220-240V  
**Size**  
1200 x 240 x 60mm  
1500 x 240 x 60mm  
**Colour Temperature**  
4000K  
**Material**  
PMMA Lens  
Steel Housing

Model: UFO100/150/200



IP65

## UFO High Bay

**System Wattage**  
100W-2000W  
**Lumens**  
10000-20000  
**Voltage**  
220-240V  
**Size**  
300 x 110mm  
400 x 140mm  
405 x 160mm  
**Colour Temperature**  
4000K  
**Material**  
Polycarbonate Lens  
Aluminium Housing

Model: LDHBRB2000



IP20

## Decorative High Bay with Prismatic

**System Wattage**  
20W-45W  
**Lumens**  
2000-5000  
**Voltage**  
220-240V  
**Size**  
445 x 315mm  
**Colour Temperature**  
4000K  
**Material**  
Polycarbonate Lens  
Aluminium Housing

Model: LDHBG



IP20

## Decorative High Bay with Glass

**System Wattage**  
20W-45W  
**Lumens**  
2000-5000  
**Voltage**  
220-240V  
**Size**  
500 x 315mm  
**Colour Temperature**  
4000K  
**Material**  
Glass Lens  
Aluminium Housing

# AQUAMAX LED

Model: LDNCC2



## Features:

- Impact Resistant ABS Housing
- Retained Polycarbonate Opal Diffuser with Stainless Steel Clips
- Stainless Steel Mounting Brackets
- Integral IP65 Sensor Option
- Integral Emergency Option



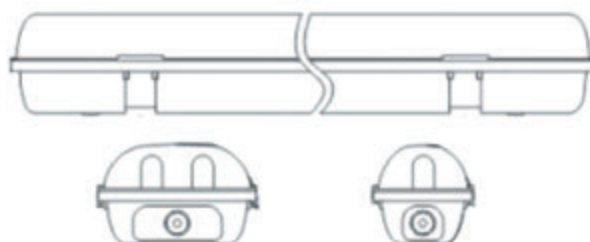
2FT 12W 900Lm 4000K Single LED Non Corrosive	LDNCC2
4FT 24W 1800Lm 4000K Single LED Non Corrosive	LDNCC4
5FT 32W 2500Lm 4000K Single LED Non Corrosive	LDNCC5
5FT 46W 4000Lm 4000K Single LED Non Corrosive	LDNCC5HO
6FT 40W 4000Lm 4000K Single LED Non Corrosive	LDNCC6
2FT 24W 1800Lm 4000K Single LED Non Corrosive	LDNCC22
4FT 45W 3600Lm 4000K Single LED Non Corrosive	LDNCC24
5FT 70W 6400Lm 4000K Single LED Non Corrosive	LDNCC25
5FT 92W 8000Lm 4000K Single LED Non Corrosive	LDNCC25HO
6FT 80W 8000Lm 4000K Twin LED Non Corrosive	LDNCC26
Integrated 3Hr Emergency Twin	/EM
Integrated IP65 PIR Occupancy/Daylight Sensor	/CDDPER/MB

System Wattage  
12w-92w  
Lumens  
900-8000

**LED**

**IP65**

**3  
YEAR  
WARRANTY**



# AQUAMAX SLIM

Model: LDNCC5EC



## Features:

Slimline, Easy Fit, IP65 LED Non-corrosive, External Fixings, Detachable Terminal Cover, Quick and Easy Cable Termination, No Need to Open the Body. Supplied with Stainless Steel Fixing Clips & Skin Top Style Cable Gland

**Diffuser:** Opal Polycarbonate

**Body:** Polycarbonate

## Dimensions:

1500 x 76 x 65mm

1500 x 100 x 68mm

**Fixing Centres:** 1120mm



System Wattage  
35w-70w  
Lumens  
3,150-6,300

**LED**

**IP65**

**3  
YEAR  
WARRANTY**





# FLOOD LIGHTS POLYCARBONATE



Serving the commercial  
lighting industry since 1993

Model: LDPF30

## PF30/45/60

**System  
Wattage**  
30w-60w

**Lumens**  
4000-7800

**Voltage**  
220-240V

**Size**  
270 x 405  
x 400mm

**Colour  
Temperature**  
4000K

**Material**  
Polycarbonate  
Lens

IP66



Model: PFF95

## PFF95/120/145

**System  
Wattage**  
95w-145w

**Lumens**  
8000-14000

**Voltage**  
220-240V

**Size**  
265 x 265  
x 114mm

**Colour  
Temperature**  
4000K

**Material**  
Polycarbonate  
Lens

IP66



Model: LDFLS

**System  
Wattage**  
85w-150w

**Lumens**  
14000-24000

**Voltage**  
220-240V

**Size**  
438 x 428  
x 148mm

**Colour  
Temperature**  
4000K

**Material**  
Glass Lens  
Aluminium  
Housing

IP66





# WALL PACK

Model: LDADAC30



## Features:

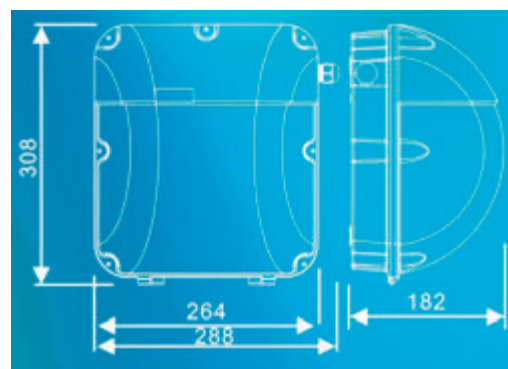
Aluminium Die-Cast Base  
Opal Polycarbonate Lense  
F Rated & IP65  
High Purity Anodized Aluminium Reflector  
CCT: 4500K  
Operating Temp; -40° C - 60° C

System Wattage  
30W  
Lumens  
2400

**LED**

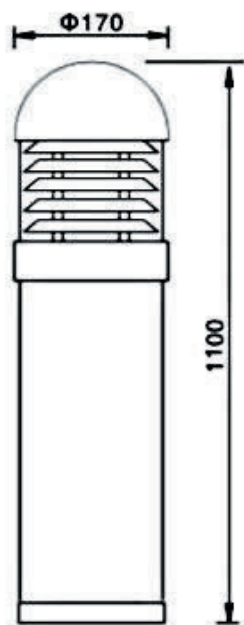
**IP65**

**2  
YEAR  
WARRANTY**



# LED HD BOLLARD

Model: LDBDHD12



The HD type bollard is constructed from aluminium, with a vandal resistant polycarbonate diffuser. The bollard can be surface mounted or root mounted with an optional root mounting kit.

Ideally suited to building perimeters, pathways and landscaping.

## Features:

- Aluminium Body
- Root Mounted Kit (Optional)
- Polycarbonate Diffuser

LED Bollard 12W 1500 Lumen	LDBDHD12
LED Bollard 25W 3000 Lumen	LDBDHD18
LED Bollard 35W 4500 Lumen	LDBDHD26

System Wattage  
12W-35W  
Lumens  
1500-4500

**LED**

**IP65**

**5  
YEAR  
WARRANTY**



Designed and built  
in the UK

Model: LDDL

## LED Slimline Panel Downlighter

**System  
Wattage**  
12W-23W

**Lumens**  
700-1300

**Voltage**  
220-240V

**Size**  
160-225mm

**Colour  
Temperature**  
4000K

**Material**  
Polycarbonate  
Lens

IP20



Model: LDDFA 1

## E Trunk Standard 40W

**System Wattage**  
40W

**Lumens**  
2750

**Voltage**  
220-240V

**Size**  
185 x 180mm

**Colour Temperature**  
4000K

**Material**  
Aluminium & Glass  
Cutout 175mm Ø



IP20

Model: LDDFA 2

## E Trunk Standard 60W

**System Wattage**  
60W

**Lumens**  
4000

**Voltage**  
220-240V

**Size**  
185 x 180mm

**Colour Temperature**  
4000K

**Material**  
Aluminium & Glass  
Cutout 175mm Ø



IP20

Model: LDDFR

## Oblong LED Tilt Downlighter 40W

**System Wattage**  
40W

**Lumens**  
3500

**Voltage**  
220-240V

**Size**  
230 x 145 x 85mm

**Colour Temperature**  
4000K

**Material**  
Aluminium & Glass  
Cutout 220 x 130mm



IP20

Model: LDDL 40

## Premium LED Downlighter

**System Wattage**  
40W

**Lumens**  
5000

**Voltage**  
220-240V

**Size**  
225mm

**Colour Temperature**  
4000K

**Material**  
Aluminium & Glass  
Cutout 185mm Ø



IP20



Model: LDDAC

## Type 'C' Amenity

<b>System Wattage</b> 15W	<b>Lumens</b> 1600	<b>Voltage</b> 220-240V
<b>Size</b> 275 x 270 x 195mm	<b>Colour Temperature</b> 4000K	<b>Material</b> Polycarbonate

IP65



Model: LDDAB

## Type 'B' Amenity

<b>System Wattage</b> 12W	<b>Lumens</b> 1600	<b>Voltage</b> 220-240V
<b>Size</b> 279 x 173 x 132mm	<b>Colour Temperature</b> 4000K	<b>Material</b> Polycarbonate Lens

IP65



Model: LDPLE360

## Eyelid Amenity

<b>System Wattage</b> 16W-70W	<b>Lumens</b> 2000-7800	<b>Voltage</b> 220-240V
<b>Size</b> 360 x 110mm	<b>Colour Temperature</b> 4000K	<b>Material</b> Polycarbonate Lens

IP65



Model: LDPLESQ PLE SQ

## Pizza Square

**System  
Wattage**  
11W-22W

**Lumens**  
1200-3000

**Voltage**  
220-240V

**Size**  
225 x 225  
x 100mm

**Colour  
Temperature**  
4000K

**Material**  
Polycarbonate  
Lens

IP65



Model: LDPLE

## Pizza Round

**System Wattage**  
11W-22W

**Lumens**  
1200-3000

**Voltage**  
220-240V

**Size**  
286 x 80mm

**Colour Temperature**  
4000K

**Material**  
ABS Polycarbonate

IP65



Model: LDPLEPO

## Polo

**System Wattage**  
11W-22W

**Lumens**  
1200-3000

**Voltage**  
220-240V

**Size**  
330 x 100mm

**Colour Temperature**  
4000K

**Material**  
ABS Polycarbonate

IP65



Model: LD OP 3

## Opaline 320

**System Wattage**  
11W-22W

**Lumens**  
1200-3000

**Voltage**  
220-240V

**Size**  
325 x 107mm

**Colour Temperature**  
4000K

**Material**  
Aluminium  
Polycarbonate

IP20



Model: LD OP 4

## Opaline 420

**System Wattage**  
11W-35W

**Lumens**  
1200-4000

**Voltage**  
220-240V

**Size**  
425 x 117mm

**Colour Temperature**  
4000K

**Material**  
Aluminium  
Polycarbonate

IP20



# LED EMERGENCY



**ZES1NM/M**  
Small LED IP44 Bulkhead  
Size: 230mm x 75mm x 37mm



**ZES38M**  
LED NM/maintained Exit Box  
Size: 392mm x 192mm x 60mm  
**ZES38ST**  
LED Self Test Exit Box  
Size: 392mm x 192mm x 30mm



**ZES91**  
LED NM/maintained Recessed Exit Blade  
Size: 355mm x 114mm x 63mm  
Cutout: 335mm x 90mm



**ZES17M**  
LED NM/maintained IP65 Bulkhead  
Size: 335mm x 95mm x 70mm



**ZES31**  
LED NM/maintained Hanging Exit Sign  
Size: 350mm x 188mm x 20mm



**ZES11NM/M**  
LED NM/maintained IP65 Starburst  
**ZES11SLAVE**  
LED 24/50/110V Slave Starburst  
Size: 156mm x 100mm x 50mm



**ZES80**  
LED NM/maintained Recessed Bulkhead  
Size: 3700mm x 140mm x 80mm  
Cutout: 350mm x 120mm



# LED EMERGENCY



## ZES38/SLAVE

Led 24/50/110 Universal Slave Exit Box  
Size: 392mm x 192mm x 60mm



## ZESD1

1w Non Maintained Downlighter

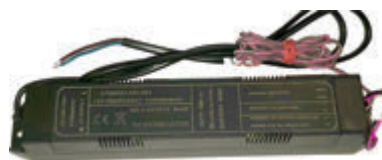
## ZESD3

3w Nm/maintained Downlighter



## ZTS216

Led 2 x 3W Twinspot



## ZESLDP1

Led Panel Conversion Kit

## ZESLDP2

Led Downlight + Panel Conversion Kit

## ZESLDP1GU

GU10 Led Mains Conversion



## ZTS248ST

Led 2 x 3W IP65 Self Test Twinspot



## ZES18/SLAVE

Led 24/50/110V Universal Slave Bulkhead

Size: 335mm x 95mm x 70mm



## ZTS215

Led 2 X 3W Small Twinspot

Size: 310mm x 310mm x 72mm

Model: LDSL50

## Streetlight 50W

<b>System Wattage</b> 50W	<b>Lumens</b> 5000	<b>Voltage</b> 220 - 240V
<b>Size</b> 420 x 195 x 115 60mm Entry	<b>Colour Temperature</b> 5700K	<b>Material</b> Aluminium/ Glass

IP65



Model: LDSL75

## Streetlight 75W

<b>System Wattage</b> 75W	<b>Lumens</b> 7500	<b>Voltage</b> 220 - 240V
<b>Size</b> 535 x 242 x 140 60mm Entry	<b>Colour Temperature</b> 5700K	<b>Material</b> Aluminium/ Glass

IP65



Model: LDSL100

## Streetlight 100W

<b>System Wattage</b> 100W	<b>Lumens</b> 10000	<b>Voltage</b> 220 - 240V
<b>Size</b> 535 x 242 x 140 60mm Entry	<b>Colour Temperature</b> 5700K	<b>Material</b> Aluminium/ Glass

IP65



# IP RATED LED RECESSED PANELS



Serving the commercial  
lighting industry since 1993

Model: LDMFIPD

## Recessed Panel 600 x 600

**System  
Wattage**  
38W-70W

**Lumens**  
4000-6500

**Voltage**  
220-240V

**Size**  
595 x 595mm

**Colour  
Temperature**  
4000K

**Material**  
Polycarbonate  
Lens

IP65 Front



Model: LDMSIPD

## Surface Panel 600 x 600

**System  
Wattage**  
38W-70W

**Lumens**  
4000-6500

**Voltage**  
220-240V

**Size**  
595 x 595mm

**Colour  
Temperature**  
4000K

**Material**  
Polycarbonate  
Lens

IP65



Model: LDMFIPD126

## Recessed Panel 1200 x 600

**System  
Wattage**  
38W-70W

**Lumens**  
4000-6500

**Voltage**  
220-240V

**Size**  
1195 x 595mm

**Colour  
Temperature**  
4000K

**Material**  
Polycarbonate  
Lens

IP65 Front





Model: LDMFP/4

## Standard Panel 600 x 600

**System  
Wattage**  
38W

**Lumens**  
3000

**Voltage**  
100-240V

**Size**  
595 x 595mm

**Colour  
Temperature**  
4000K

**Material**  
Polycarbonate  
Lens

IP20



Model: LDMFP 126/4

## Standard Panel 1200 x 600

**System Wattage**  
60W

**Lumens**  
4300

**Voltage**  
220-240V

**Size**  
1195 x 595mm

**Colour Temperature**  
4000K

**Material**  
Aluminium  
Polycarbonate

IP20



Model: LDMAGNA

## Magna LED

**System Wattage**  
20W-60W

**Lumens**  
2000-6000

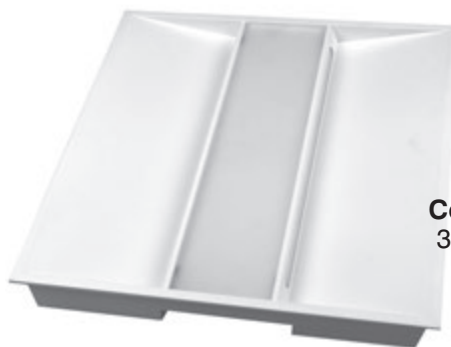
**Voltage**  
220-240V

**Size**  
595 x 595 x 60mm

**Colour Temperature**  
3000K/4000K/5000K

**Material**  
Steel  
Polycarbonate

IP20



Model: LDCARDI

## Cardi LED

**System Wattage**  
45w-100W

**Lumens**  
3000-5000

**Voltage**  
220-240V

**Size**  
595 x 595 x 68mm

**Colour Temperature**  
4000K

**Material**  
Steel  
Polycarbonate

IP20



Model: BESPOKE

## Armstrong Ceiling Panel LED

**System Wattage**  
45w-100W

**Lumens**  
4000-10000

**Voltage**  
220-240V

**Colour Temperature**  
2000K/4000K/5000K

**Material**  
Steel  
Polycarbonate

IP20



For Armstrong  
Ceiling Slot  
Custom Sized

Model: LDFL30/LDFL50

## SMD Flood 30/50W

**System  
Wattage**  
30-50 W

**Lumens**  
2400-4000

**Voltage**  
200-240V

**Size**  
223 x 184  
x 51 (30W)  
233 x 284  
x 62 (50W)

**Colour  
Temperature**  
4500K

**Material**  
Aluminium/  
Glass



IP66

Model: LDFL100

## SMD Flood 100W

**System  
Wattage**  
100W

**Lumens**  
8000

**Voltage**  
95-265V

**Size**  
335 x 300  
x 70mm

**Colour  
Temperature**  
4500K

**Material**  
Aluminium/  
Glass



IP66

Model: LDFL150

## SMD Flood 150W

**System  
Wattage**  
150W

**Lumens**  
12000

**Voltage**  
95-265V

**Size**  
385 x 300  
x 160mm

**Colour  
Temperature**  
4000K

**Material**  
Aluminium/  
Glass



IP66



## LED Pro Sportslighter

The Sports Lighter and Architectural Flood luminaire is available in two wattages with specially designed optical systems to provide uniform light levels for sports applications and architectural highlighting. Four beam patterns provide optical distribution that is designed to replace HID lighting systems of 400W to 1500W MH or HPS.

Typical sports applications include football, golf, motor vehicle tracks, tennis and outdoor recreation. Commercial flood light and accent lighting applications include retail centres, theme parks, schools and universities, public transit and airports, mid and high rise buildings and bridge structures. Mounting heights of up to 24 meters can be used based on light level and uniformity requirements.

Engineered with careful consideration for the best possible performance

### Specifications and Features:

#### Housing:

Die cast aluminium housing with top glare shield, integral heat sinking and driver compartment. Laser aiming bracket is provided on the top of the housing. Heavy duty adjustable yoke allows for pole downward and ground/wall upward aiming. Nickel-Plated stainless steel hardware.

#### Finish:

Textured architectural grey powdercoat finish over a chromate conversion coating. Custom colours available upon request

#### Lens:

Clear one-piece moulded ¼-section vandal-resistant polycarbonate lenses in 2x2, 3x3, 4x4, and 5x5 distributions. 4 lenses per fixture, with automatically applied closed cell gasketing.

#### Mounting Options:

Heavy duty yoke allows for aiming horizontally and vertically. Locking bolts can be configured for up or down aiming. Adjustment slots are stamped with embossed 5 degree increment marks. Fixture is supplied with 900mm flex and liquid tight connector to allow for installation without opening the housing to make circuit connections. Yoke can be bolted to sports lighting cross arms or other structures.

#### LED:

Aluminium Boards

#### Wattage:

536w array model: 584w (Up to 1500w HID equivalent)

#### Driver:

Electronic driver, 120-277V, 50/60Hz or 347-480V, 50/60Hz; less than 20% THD and PF>0.90. Standard internal surge protection 6kV. 0-10V dimming standard for a dimming range of 100% to 10%; dimming source current is 150ma.



# Case Study Lancaster University



Saturn Lighting was requested to provide a solution to upgrade the unique Thorn fittings first installed in 1997.

The original fittings of 40pcs 2 x 26w PL had reached end of life, combined with providing a substantial energy saving as the reading room in the library is open 24hrs a day 7 days a week. This was achieved by designing a purpose made gear tray, LED array holder/reflector and utilising Tridonic LED Boards combined with Tridonic Drivers.

By reducing the annual consumption from 55,910Kwh to 15,724Kwh showing a 72% reduction in energy use provided a saving of over £4000 per annum.



## Energy Saving Calculator

### Existing Costs

Annual Consumption (Kwh)	55910.4
Cost Per Unit (£)	0.1
Annual Electricity Cost	£5,591.04
Annual Tonnes of CO2 Produced	24.04

### Proposed Costs

Annual Consumption (Kwh)	15724.8
Cost Per Unit (£)	0.1
Annual Electricity Cost	£1,572.48
<b>Annual Saving</b>	<b>£4,018.56</b>
Annual Tonnes of CO2 Produced	6.76
<b>Annual Tonnes of CO2 Saved</b>	<b>17.28</b>

# DISCHARGE FLOOD LIGHT AND LOW BAYS



Serving the commercial  
lighting industry since 1993



## Low Bays

LB150S	150W SON LOWBAY	IP20
LB250S	250W SON LOWBAY	IP20
LB400S	400W SON LOWBAY	IP20
LB150M	150W HQI LOWBAY	IP20
LB250M	250W HQI LOWBAY	IP20
LB400M	400W HQI LOWBAY	IP20
LSG	SAFETY GLASS	
LWG	WIRE GUARD	

HQI variants are supplied C/W safety glass  
All lowbays are supplied C/W lamp

## Superior Flood Asymetric

DFPAS150	150W SON SUPERIOR ASYMETRIC	IP65
DFPAS250	250W SON SUPERIOR ASYMETRIC	IP65
DFPAS400	400W SON SUPERIOR ASYMETRIC	IP65
DFPAM150	150W HQI SUPERIOR ASYMETRIC	IP65
DFPAM250	250W HQI SUPERIOR ASYMETRIC	IP65
DFPAM400	400W HQI SUPERIOR ASYMETRIC	IP65
PC	PHOTOCELL FITTED	
DFPGR	WIRE GUARD	

All superior floodlights are supplied C/W lamp



## Superior Flood Symetrical

DFPS150	150W SON SUPERIOR	IP65
DFPS250	250W SON SUPERIOR	IP65
DFPS400	400W SON SUPERIOR	IP65
DFPM150	150W HQI SUPERIOR	IP65
DFPM250	250W HQI SUPERIOR	IP65
DFPM400	400W HQI SUPERIOR	IP65
PC	PHOTOCELL FITTED	
DFPGR	WIRE GUARD	

All superior floodlights are supplied C/W lamp



## LED Extrusions & Architectural



Linear surface, suspended  
& recessed aluminium  
LED lighting, stand alone  
luminaires and custom  
lengths. RAL colour finishes  
to your specification.

Please contact our specification  
department for further details



## Globes

We offer an extensive range of  
Globes, PC, PMMA, Opal,  
Clear, Smoked. With or without  
Louvre Stack, with or without  
“monks cap”.

Please contact our specification  
department for further details



**Saturn Lighting**

Stone Hill Road  
Express Trading Estate  
Farnworth  
Bolton  
BL4 9TP

Tel | **01204 575100**  
Fax | 01204 574100  
sales@saturnlighting.co.uk

**[www.saturnlighting.co.uk](http://www.saturnlighting.co.uk)**

